



# KAI MEDICAL DERMATOLOGY INSTRUMENT

-Biopsy Punch / Dermal Curette-



Product specifications may change without notice.

## KAI INDUSTRIES CO., LTD.

1110 Oyana, Seki-shi, Gifu 501-3992, Japan  
Phone:+81 (0)575 28 5040  
Fax:+81 (0)575 28 6611  
www.kaimedical.jp/



## KAI EUROPE GmbH

Kottendorfer Straße 5, 42697 Solingen, Germany  
Phone:+49 (0)212 23 23 80  
Fax:+49 (0)212 23 23 899  
www.kai-europe.com

**JAPAN QUALITY**  
Pursue the safety and quality of life in healthcare globally

Founded in 1908 in Seki-shi, Gifu Prefecture, Japan, the KAI Group is a cutlery manufacturer with over 100 years of history. Based on the "Blacksmithing spirit" of making tools for everyday life with excellent craftsmanship, the company has continued to innovate with advanced factory facilities and improved production technologies.

The KAI Group incorporates the "DUPS" concept in product development. The products have to be well-designed (Design), unique (Uniqueness), patent-worthy (Patents), safe (Safety) and full of stories (Stories). Our goal is to create products that meet these criteria, and through our products, we hope to create wonderful experiences and enjoyable moments for our customers. Today, we offer more than 10,000 products, ranging from kitchenware, confectionery, beauty care products (household items) to professional cutlery and medical products.

We will continue to strive to make our products an integral part of the daily lives of people around the world, taking into account the materials they are made from and the environmental impact of their disposal.

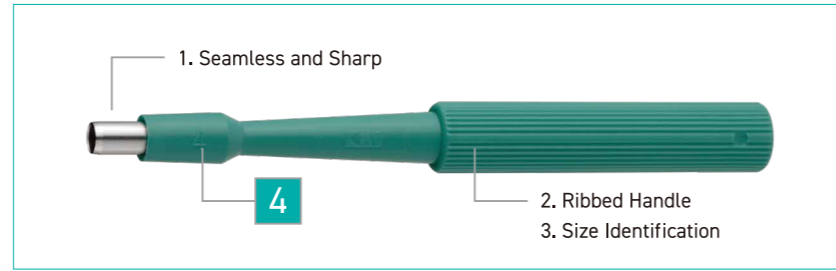
In the field of medical products, we use the technology we have developed in the production of razors and the other unique technology we have upgraded over the years to manufacture blades and instruments for use in ophthalmology, surgery and dermatology.

By improving the quality of our blades, we strive to improve the safety of the medical treatment and the quality of life (QoL) of patients around the world.





# DISPOSABLE BIOPSY PUNCH



## Feature

- Blade with excellent sharpness and seamless structure.
- Handle with straight knurling.
- Handle with its size embossed

All aimed for optimal tissue collection for biopsy.

## Specification

- Blade : Stainless steel
- Sterilized
- Single use
- GS1-128 barcode
- 20 pcs/box

## Application

- Skin biopsy
- Skin disease treatment

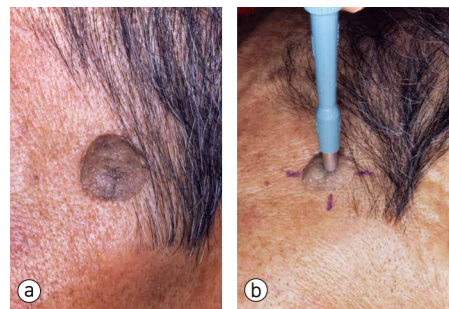
## Size Lineup

Ref No.	Diameter	Ref No.	Diameter
BP-10F	1.0 mm	BP-35F	3.5 mm
BP-15F	1.5 mm	BP-40F	4.0 mm
BP-20F	2.0 mm	BP-50F	5.0 mm
BP-25F	2.5 mm	BP-60F	6.0 mm
BP-30F	3.0 mm	BP-80F	8.0 mm



## Reference

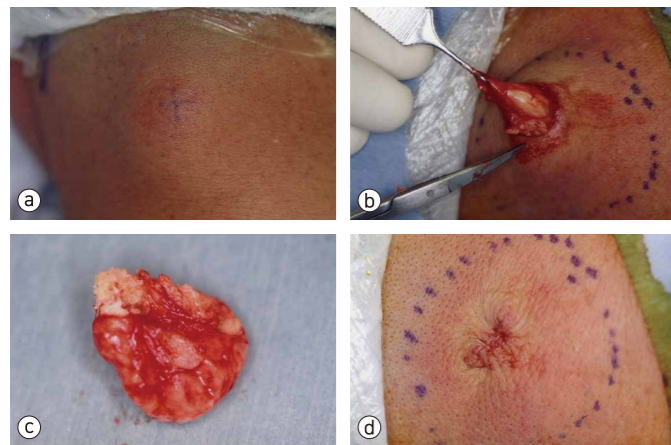
- Skin biopsy



Application to skin biopsy (Determining malignant or not).  
Simple and less possibility of crushing tissue compared to surgical knife and needling.  
Press the leading end of the punch vertically to the skin surface.  
Uniformly distribute force between pressing and drilling.

- a : Senile wart developed on the face
- b : Positioning the biopsy punch site

- Simple microsurgical application (Simplified removal of subcutaneous tumor : boring method)

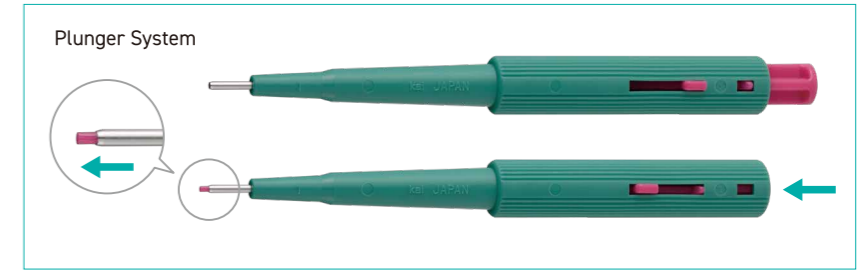


Application to an epidermal cyst.  
Can minimize the incision line and bleeding.  
Can omit the time and effort of suturing.

- a : Epidermal cyst of the neck
- b : Bore about 1/3 or 1/4 of the cyst diameter.
- c : Removed epidermal cyst.
- d : Surgical wound after removal.

Manabu MAEDA, MD & Ph D  
Department of Dermatology, Hachiman Hospital

# DISPOSABLE BIOPSY PUNCH WITH PLUNGER



## Feature

- Equipped with a plunger to the regular biopsy punch.
- A single knock of the plunger can solve the possible tissue stuck inside the blade.
- Color coding for each size.

## Specification

- Blade : Stainless steel
- Sterilized
- Single use
- GS1-128 barcode
- 20 pcs/box

## Application

- Skin biopsy
- Skin disease treatment
- Skin reconstruction

## Size Lineup

Ref No.	Diameter	Color
BPP-10F	1.0 mm	Yellow
BPP-15F	1.5 mm	Orange
BPP-20F	2.0 mm	Red
BPP-30F	3.0 mm	Pink
BPP-40F	4.0 mm	Green

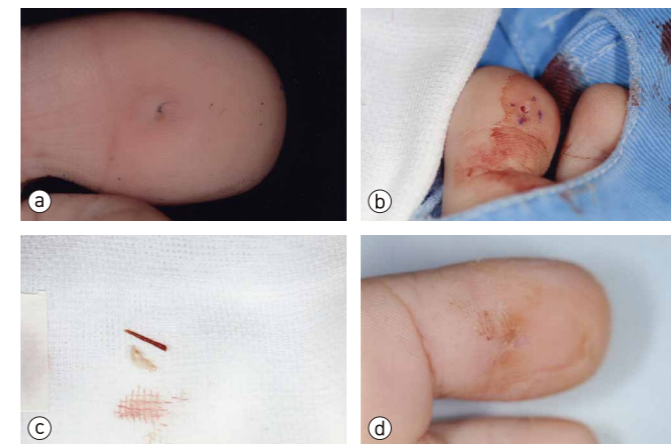


## Reference

- Simple microsurgical application (Total enucleation of small skin tumor)

The techniques is exactly the same as in skin biopsy.  
Uniformly distribute force between pressing and drilling.  
A relatively small lentigo or nevus cell nevus which are covered by the inner diameter of the biopsy punch.  
Can avoid cutting extra cut of normal skin rather than spindle shape incision with a regular surgical knife.

- Simple microsurgical application (Removal of foreign body)

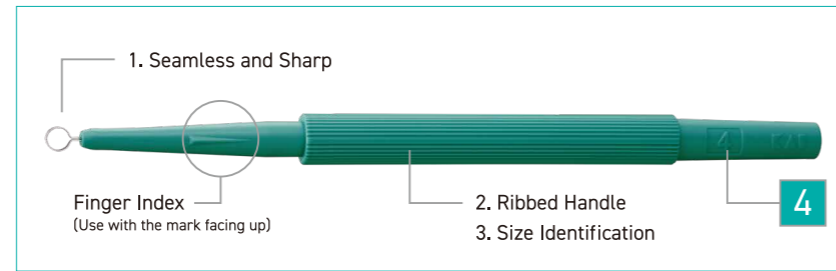


Application of boring method.  
Remove foreign bodies (spines etc.) with small incision.  
Can immediately walk after operation.

- a : Spines to the toe.
- b : Spine removed with 2.5 mm diameter punch.
- c : Removed spine.
- d : After operation.

Manabu MAEDA, MD & Ph D  
Department of Dermatology, Hachiman Hospital

# DISPOSABLE DERMAL CURETTE



## Feature

- Blade with excellent sharpness and seamless structure.
- Handle with straight knurling.
- Handle with its size embossed

All aimed to simplify soft tissue removal.

## Specification

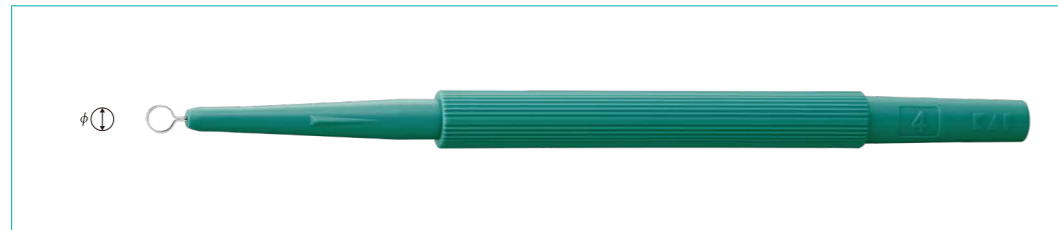
- Blade : Stainless steel
- Sterilized
- Single use
- GS1-128 barcode
- 20 pcs/box

## Application

- Skin disease treatment
- Skin biopsy

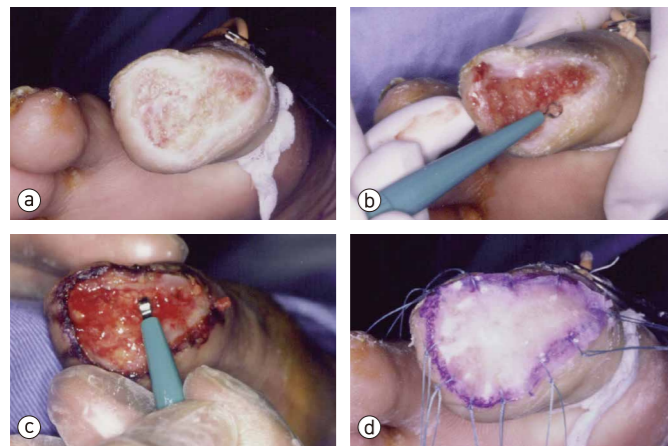
## Size Lineup

Ref No.	Diameter
MK402	2 mm
MK403	3 mm
MK404	4 mm
MK405	5 mm
MK407	7 mm



## Reference

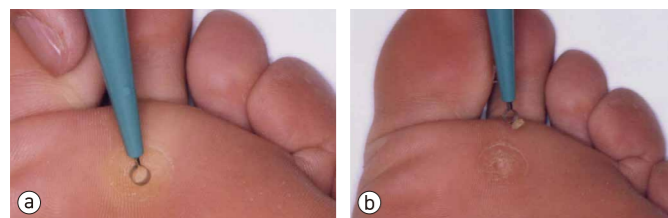
- Removing soft tissue at the affected area (Removal of malignant granulation)



Application to soft tissue removal.  
Easier, more accurate and shorter time than typical way (forceps, coopers or surgical knife etc.)

- a : Affected area covered with malignant malignation. Difficult to epithelialize.
- b : Remove the surrounding epidermis thickened like a bank with 2 mm curette.
- c : Remove the malignant granulation with 3 mm curette.
- d : Artificial dermis adhered to the affected area.

- Removing soft tissue at the affected area (Removal of clavus)



Application to soft tissue removal.  
After removal of clavus, apply Spiel ointment at the center of it.  
The whitened macerated site is similiary treated with the curette.

- a : Apply 2 mm curette to the plantar clavus.
- b : Rotate the blade full turn to shave the central part.

Manabu MAEDA, MD & Ph D  
Department of Dermatology, Hachiman Hospital

# Product list - Disposable Biopsy Punch

Application	Description	Ref No.
	<b>BIOPSY PUNCH</b>	
	BIOPSY PUNCH 1 mm	BP-10F
	BIOPSY PUNCH 1.5 mm	BP-15F
	BIOPSY PUNCH 2 mm	BP-20F
	BIOPSY PUNCH 2.5 mm	BP-25F
• Skin Biopsy	BIOPSY PUNCH 3 mm	BP-30F
• Dermatology Treatment	BIOPSY PUNCH 3.5 mm	BP-35F
	BIOPSY PUNCH 4 mm	BP-40F
	BIOPSY PUNCH 5 mm	BP-50F
	BIOPSY PUNCH 6 mm	BP-60F
	BIOPSY PUNCH 8 mm	BP-80F
	<b>BIOPSY PUNCH with Plunger</b>	
	BIOPSY PUNCH 1 mm with Plunger	BPP-10F
• Skin Biopsy	BIOPSY PUNCH 1.5 mm with Plunger	BPP-15F
• Dermatology Treatment	BIOPSY PUNCH 2 mm with Plunger	BPP-20F
	BIOPSY PUNCH 3 mm with Plunger	BPP-30F
	BIOPSY PUNCH 4 mm with Plunger	BPP-40F

# Product list - Disposable Dermal Curette

Application	Description	Ref No.
	<b>Dermal Curette</b>	
	DERMAL CURETTE 2 mm	MK402
• Dermatology Treatment	DERMAL CURETTE 3 mm	MK403
• Skin Biopsy	DERMAL CURETTE 4 mm	MK404
	DERMAL CURETTE 5 mm	MK405
	DERMAL CURETTE 7 mm	MK407

## Biopsy Punch (Regular and w/ Plunger)



## Dermal Curette

