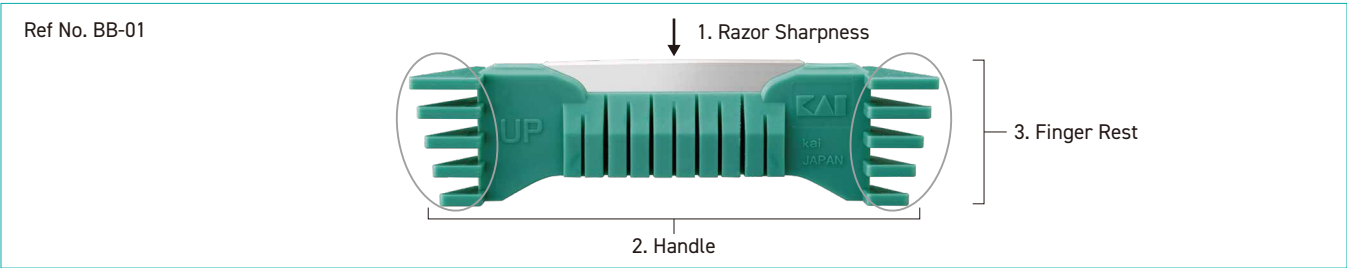


KAI MEDICAL DERMATOLOGY INSTRUMENT

-Biopsiblade-

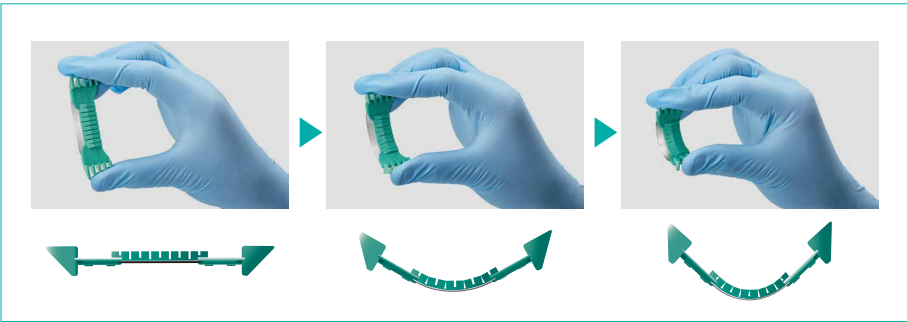


DISPOSABLE BIOPSI BLADE



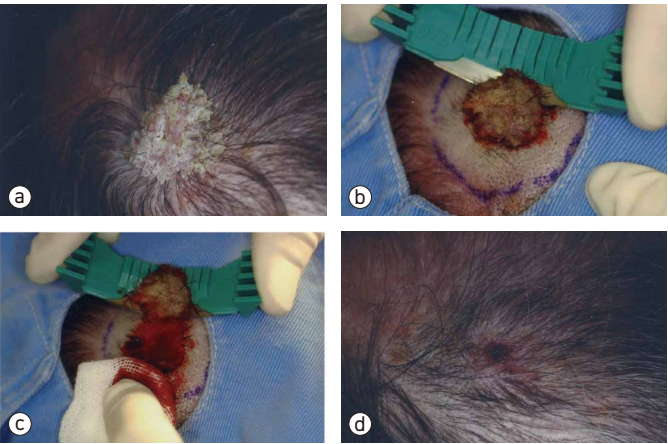
Feature	Specification	Application
<ul style="list-style-type: none">• Razor blade with excellent sharpness.• Slitted stopper to prevent too much bending.• Finger rest to make finger pad hard to slip All aimed for optimal tissue collection for biopsy.	<ul style="list-style-type: none">• Blade :Stainless steel• Sterilized• Single use• GS1-128 barcode• 20 pcs/box	<ul style="list-style-type: none">• Skin disease treatment• Skin biopsy

How to use



Reference

- Skin resection



Application to a follicular tumor.
Bend slightly the BiopsiBlade.
Cut off the stem portion completely.

- a : Follicular Tumors of the Head
- b : Bend slightly the BiopsiBlade and apply
- c : Resect the affected site
- d : Several days after the operation

Manabu MAEDA, MD & Ph D
Department of Dermatology, Hachiman Hospital

